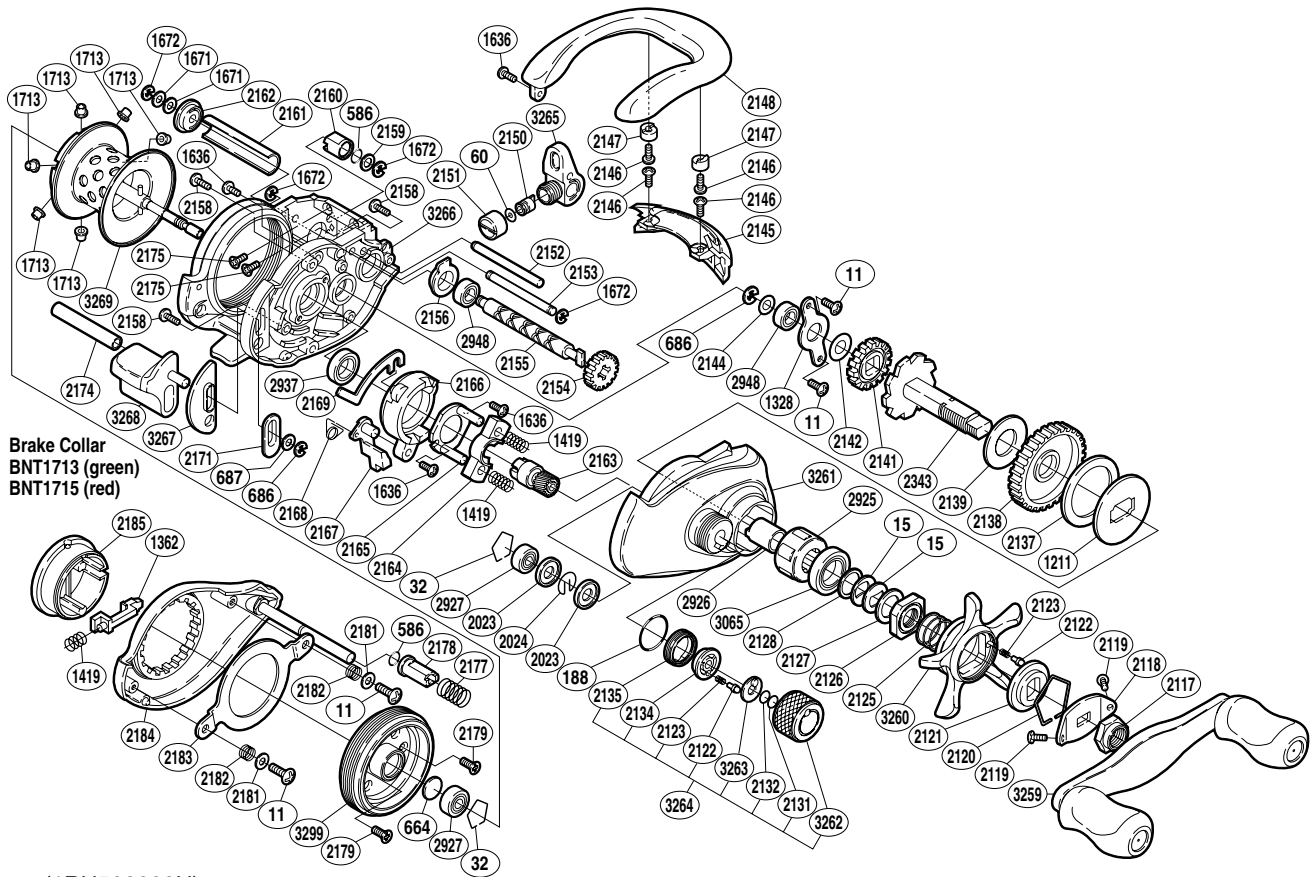


# SHIMANO®

## CALAIS A-RB

## CL-200A



(1RH503200U)

| Part No. | Description             | Part No. | Description               | Part No. | Description               |
|----------|-------------------------|----------|---------------------------|----------|---------------------------|
| BNT0011  | Screw                   | BNT2134  | Click Pin Holder          | BNT2174  | Clutch Bar Support        |
| BNT0015  | Drag Spring Washer      | BNT2135  | Cast Control Click Holder | BNT2175  | Screw                     |
| BNT0032  | Bearing Retainer        | BNT2137  | Drag Washer C             | BNT2177  | Damper Spring             |
| BNT0060  | Spacer                  | BNT2138  | Drive Gear                | BNT2178  | Damper A                  |
| BNT0188  | O Ring                  | BNT2139  | Drag Washer A             | BNT2179  | Screw                     |
| BNT0586  | O Ring                  | BNT2141  | Idle Gear A               | BNT2181  | Washer                    |
| BNT0664  | Spacer B                | BNT2142  | Idle Gear A Spacer        | BNT2182  | Brake Case Ring Spring    |
| BNT0686  | E Lock                  | BNT2144  | Washer                    | BNT2183  | Brake Case Ring           |
| BNT0687  | Spacer                  | BNT2145  | Level Wind Protector      | BNT2184  | Brake Side Plate          |
| BNT1211  | Key Washer              | BNT2146  | Screw                     | BNT2185  | Turnkey Dial              |
| BNT1328  | Drive Shaft Retainer    | BNT2147  | Line Guard Screw Cover    | BNT2343  | Drive Shaft               |
| BNT1362  | Turnkey Pawl            | BNT2148  | Thumb Rest                | BNT2925  | Roller Clutch Bearing     |
| BNT1419  | Yoke Spring             | BNT2150  | Line Guide Pawl           | BNT2926  | Roller Clutch Inner Tube  |
| BNT1636  | Screw                   | BNT2151  | Pawl Cap                  | BNT2927  | Ball Bearing              |
| BNT1671  | Washer                  | BNT2152  | Level Wind Guide          | BNT2937  | Ball Bearing              |
| BNT1672  | E Lock                  | BNT2153  | Line Guard C              | BNT2948  | Ball Bearing              |
| BNT1713  | Brake Collar (green)    | BNT2154  | Idle Gear C               | BNT3065  | Star Drag Bearing         |
| BNT2023  | Spool Shaft Clip Holder | BNT2155  | Worm Shaft                | BNT3259  | Handle Assembly           |
| BNT2024  | Spool Shaft Clip        | BNT2156  | Worm Bushing A            | BNT3260  | Star Drag                 |
| BNT2117  | Handle Nut              | BNT2158  | Screw                     | BNT3261  | Right Side Plate          |
| BNT2118  | Handle Nut Plate        | BNT2159  | Washer                    | BNT3262  | Cast Control Cap          |
| BNT2119  | Screw                   | BNT2160  | Damper B                  | BNT3263  | Cast Control Click Plate  |
| BNT2120  | Click Plate Retainer    | BNT2161  | Level Wind Guard          | BNT3264  | Cast Control Cap Assembly |
| BNT2121  | Star Drag Click Plate   | BNT2162  | Worm Bushing B            | BNT3265  | Line Guide                |
| BNT2122  | Click Pin               | BNT2163  | Pinion Gear               | BNT3266  | One-Piece Frame           |
| BNT2123  | Click Spring            | BNT2164  | Yoke                      | BNT3267  | Clutch Bar Guide B        |
| BNT2125  | Star Drag Spring        | BNT2165  | Clutch Cam Retainer       | BNT3268  | Quick-Fire II Clutch Bar  |
| BNT2126  | Star Drag Nut           | BNT2166  | Clutch Cam                | BNT3269  | Spool Assembly            |
| BNT2127  | Star Drag Spacer        | BNT2167  | Clutch Pawl               | BNT3299  | Brake Case                |
| BNT2128  | Bearing Washer          | BNT2168  | Clutch Pawl Spring        |          |                           |
| BNT2131  | Spool Tension Spacer B  | BNT2169  | Clutch Plate              |          |                           |
| BNT2132  | Spool Tension Spacer A  | BNT2171  | Clutch Bar Guide A        | BNT1715  | Brake Collar (red)        |

(161015)