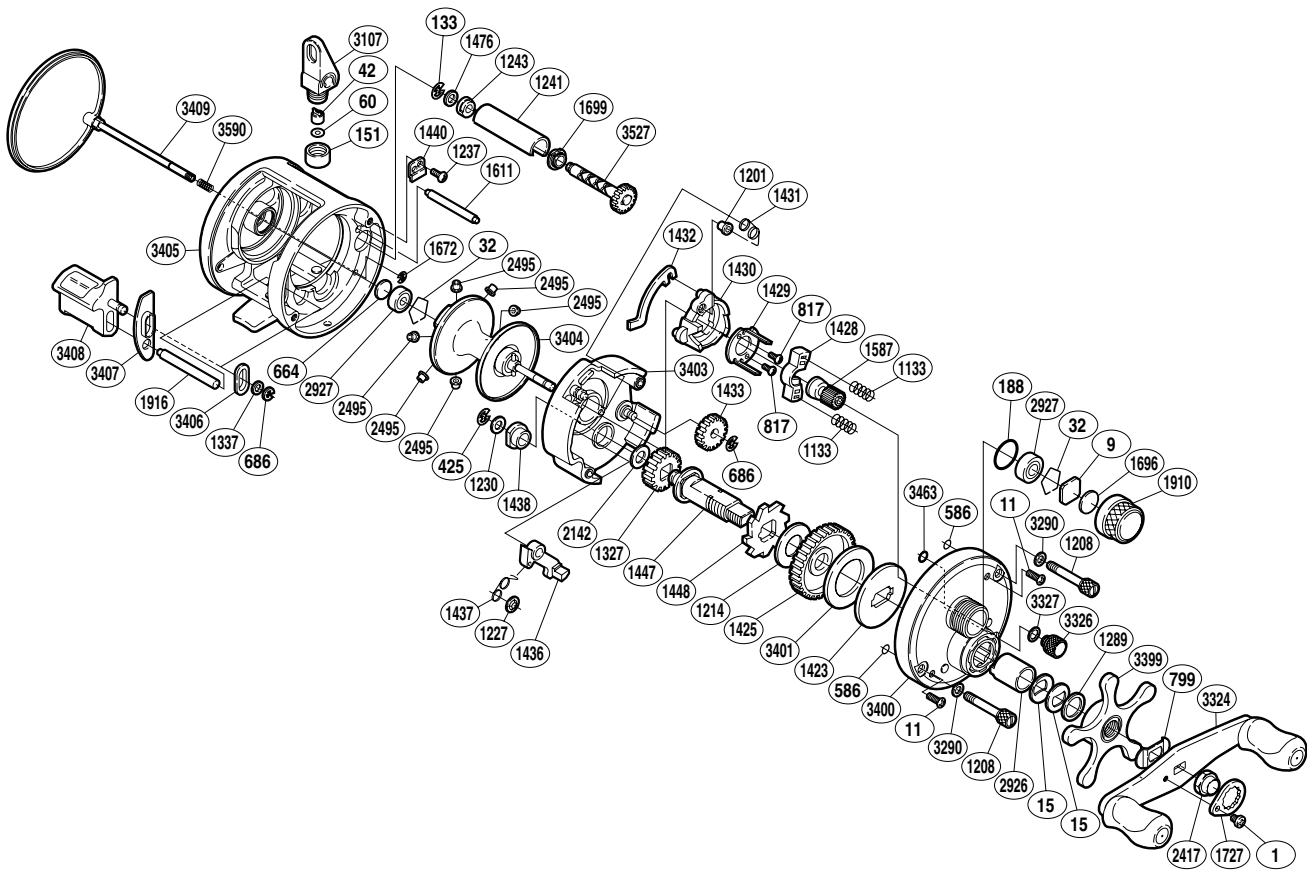


SHIMANO®

CALCUTTA A-RB

CT-100B



(1RH316100U)

| Part No. | Description | Part No. | Description | Part No. | Description |
|----------|-------------------------|----------|-------------------------|----------|--------------------------|
| BNT0001 | Screw | BNT1289 | Star Drag Spacer | BNT1916 | Clutch Bar Support |
| BNT0009 | Cast Control Spacer | BNT1327 | Idle Gear A | BNT2142 | Spacer |
| BNT0011 | Screw | BNT1337 | Spacer | BNT2417 | Handle Nut |
| BNT0015 | Drag Spring Washer | BNT1423 | Key Washer | BNT2495 | Brake Collar (green) |
| BNT0032 | Bearing Retainer | BNT1425 | Drive Gear | BNT2926 | Roller Clutch Inner Tube |
| BNT0042 | Line Guide Pawl | BNT1428 | Yoke | BNT2927 | Ball Bearing |
| BNT0060 | Spacer | BNT1429 | Clutch Cam Retainer | BNT3107 | Line Guide |
| BNT0133 | E Lock | BNT1430 | Clutch Cam | BNT3290 | Washer |
| BNT0151 | Pawl Cap | BNT1431 | Retractor Spring | BNT3324 | Handle Assembly |
| BNT0188 | O Ring | BNT1432 | Clutch Plate | BNT3326 | Side Plate Open Nut |
| BNT0425 | E Lock | BNT1433 | Idle Gear B | BNT3327 | Washer |
| BNT0586 | O Ring | BNT1436 | Clutch Pawl | BNT3399 | Star Drag |
| BNT0664 | Spacer B | BNT1437 | Clutch Pawl Spring | BNT3400 | Right Side Plate |
| BNT0686 | E Lock | BNT1438 | Drive Shaft Bushing | BNT3401 | Drag Washer |
| BNT0799 | Friction Washer | BNT1440 | Worm Bushing A Retainer | BNT3403 | Set Plate |
| BNT0817 | Screw | BNT1447 | Drive Shaft | BNT3404 | Spool Assembly |
| BNT1133 | Yoke Spring | BNT1448 | Anti-Reverse Ratchet | BNT3405 | One-Piece Frame |
| BNT1201 | Retractor Spring Collar | BNT1476 | Spacer | BNT3406 | Clutch Bar Guide A |
| BNT1208 | Side Plate Bolt | BNT1587 | Pinion Gear | BNT3407 | Clutch Bar Guide B |
| BNT1214 | Drag Washer | BNT1611 | Level Wind Guide | BNT3408 | Quick-Fire II Clutch Bar |
| BNT1227 | Push Nut (SPN-2) | BNT1672 | E Lock | BNT3409 | Left Side Plate |
| BNT1230 | Spacer | BNT1696 | Cast Control Spacer B | BNT3463 | Nut Retainer |
| BNT1237 | Screw | BNT1699 | Worm Bushing A | BNT3527 | Worm Shaft |
| BNT1241 | Level Wind Guard | BNT1727 | Handle Nut Plate | BNT3590 | Side Plate Spring |
| BNT1243 | Worm Bushing B | BNT1910 | Cast Control Cap | | |

(170802)