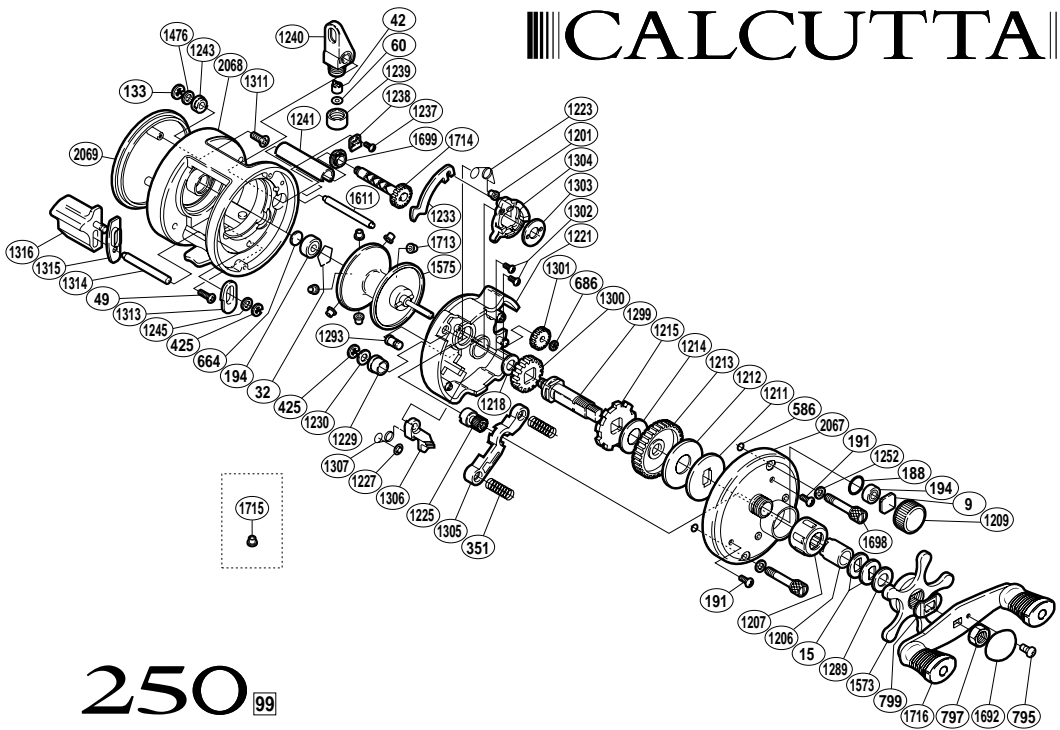


||| CALCUTTA |||



250 ⁹⁹

BNT No.	PARTS NAMES	BNT No.	PARTS NAMES	BNT No.	PARTS NAMES
0009	Cast Control Spacer	1214	Drag Washer (A)	1304	Clutch Cam
0015	Drag Spring Washer	1215	Anti-Reverse Ratchet	1305	Yoke
0032	Bearing Retainer	1218	Idle Gear (A) Spacer	1306	Clutch Pawl
0042	Line Guide Pawl	1221	Set Plate	1307	Clutch Pawl Spring
0049	Left Side Plate Screw	1223	Retractor Spring	1311	Left Side Plate Screw
0060	Spacer (optional)	1225	Pinion Gear	1313	Clutch Bar Guide (A)
0133	Worm Shaft Retainer	1227	Clutch Pawl Spring Retainer	1314	Clutch Bar Support
0188	"O" Ring	1229	Drive Shaft Bushing	1315	Clutch Bar Guide (B)
0191	Right Side Plate Screw	1230	Drive Shaft Spacer	1316	Quick-Fire II Clutch Bar
0194	Ball Bearing	1233	Clutch Plate	1476	Worm Shaft Spacer
0351	Yoke Spring	1237	Worm Bushing (A) Retainer Screw	1573	Star Drag
0425	"E" Lock	1238	Worm Bushing (A) Retainer	1575	Spool Assembly
0586	Bolt Retainer	1239	Pawl Cap	1611	Level Wind Guide
0664	Spacer (B)	1240	Line Guide	1692	Handle Nut Plate
0686	Idle Gear (B) Retainer	1241	Level Wind Guard	1698	Right Side Plate Bolt
0795	Handle Nut Plate Screw	1243	Worm Bushing (B)	1699	Worm Bushing (A)
0797	Handle Nut	1245	Clutch Bar Support Spacer	1713	Brake Collar (green)
0799	Friction Washer	1252	Right Side Plate Bolt Washer	1714	Worm Shaft
1201	Retractor Spring Collar	1289	Star Drag Spacer	1716	Handle Assembly
1206	Roller Clutch Inner Tube	1293	Retractor Spring Pin	2067	Right Side Plate
1207	Roller Clutch Bearing	1299	Drive Shaft	2068	Forged One-Piece Frame
1209	Cast Control Cap	1300	Idle Gear (A)	2069	Left Side Plate
1211	Key Washer	1301	Idle Gear (B)		
1212	Drag Washer (C)	1302	Clutch Cam Screw		
1213	Drive Gear	1303	Clutch Cam Retainer	1715	Brake Collar (red)