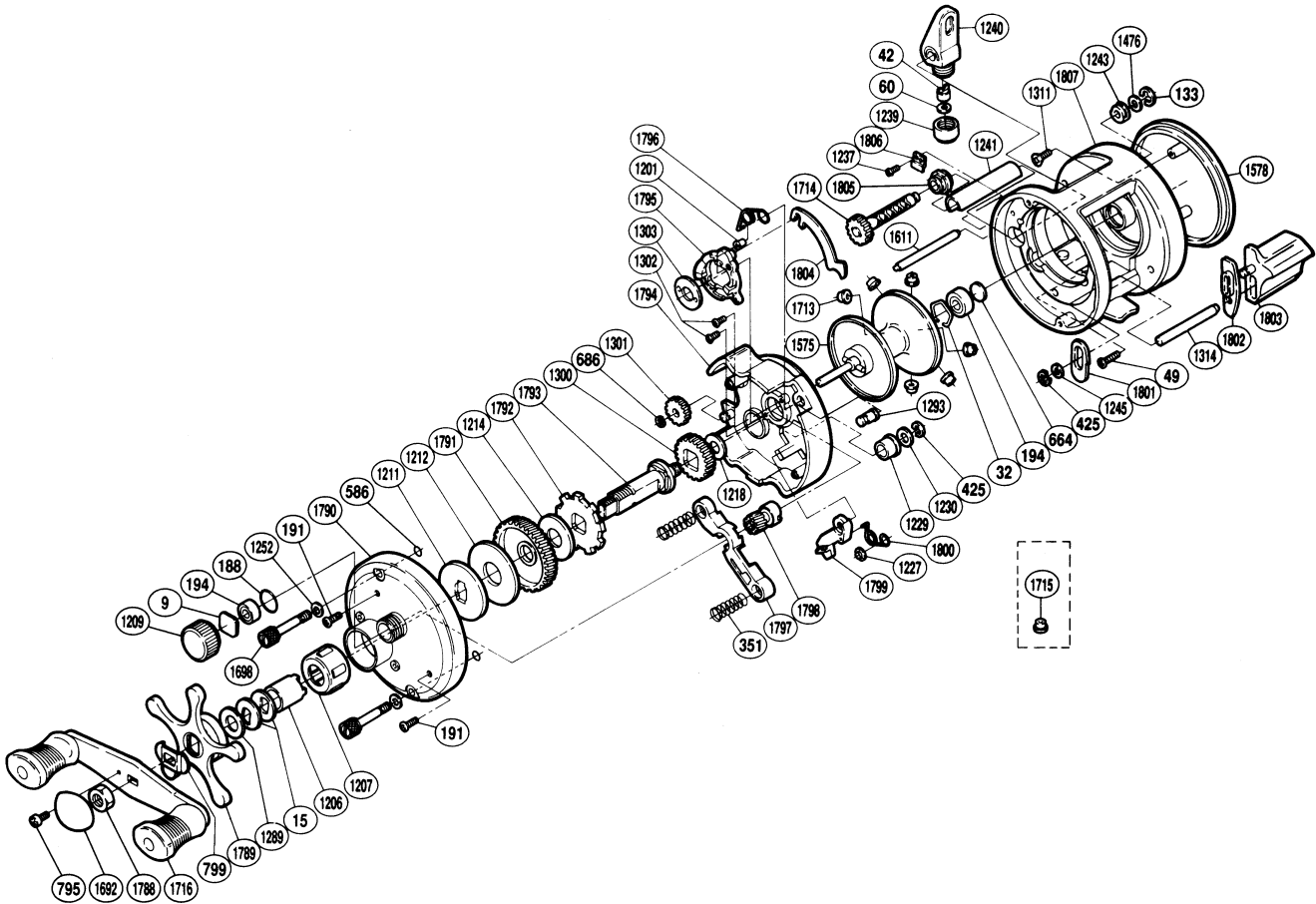


SHIMANO®

CALCUTTA

CT-251



Part No.	Description	Part No.	Description	Part No.	Description
BNT0009	Cast Control Spacer	BNT1227	Clutch Pawl Spring Retainer	BNT1716	Handle Assembly
BNT0015	Drag Spring Washer	BNT1229	Drive Shaft Bushing	BNT1788	Handle Nut
BNT0032	Bearing Retainer	BNT1230	Drive Shaft Spacer	BNT1789	Star Drag
BNT0042	Line Guide Pawl	BNT1237	Worm Bushing (A) Retainer Screw	BNT1790	Left Side Plate
BNT0049	Right Side Plate Screw	BNT1239	Pawl Cap	BNT1791	Drive Gear
BNT0060	Spacer (optional)	BNT1240	Line Guide	BNT1792	Anti-Reverse Ratchet
BNT0133	Worm Shaft Retainer	BNT1241	Level Wind Guard	BNT1793	Drive Shaft
BNT0188	"O" Ring	BNT1243	Worm Bushing (B)	BNT1794	Set Plate
BNT0191	Left Side Plate Screw	BNT1245	Clutch Bar Support Spacer	BNT1795	Clutch Cam
BNT0194	Ball Bearing	BNT1252	Left Side Plate Bolt Washer	BNT1796	Retractor Spring
BNT0351	Yoke Spring	BNT1289	Star Drag Spacer	BNT1797	Yoke
BNT0425	"E" Lock	BNT1293	Retractor Spring Pin	BNT1798	Pinion Gear
BNT0586	Bolt Retainer	BNT1300	Idle Gear (A)	BNT1799	Clutch Pawl
BNT0664	Spacer (B)	BNT1301	Idle Gear (B)	BNT1800	Clutch Pawl Spring
BNT0686	Idle Gear (B) Retainer	BNT1302	Clutch Cam Screw	BNT1801	Clutch Bar Guide (A)
BNT0795	Handle Nut Plate Screw	BNT1303	Clutch Cam Retainer	BNT1802	Clutch Bar Guide (B)
BNT0799	Friction Washer	BNT1311	Right Side Plate Screw	BNT1803	Quick-Fire II Clutch Bar
BNT1201	Retractor Spring Collar	BNT1314	Clutch Bar Support	BNT1804	Clutch Plate
BNT1206	Roller Clutch Inner Tube	BNT1476	Worm Shaft Spacer	BNT1805	Worm Bushing (A)
BNT1207	Roller Clutch Bearing	BNT1575	Spool Assembly	BNT1806	Worm Bushing (A) Retainer
BNT1209	Cast Control Cap	BNT1578	Right Side Plate	BNT1807	Forged One-Piece Frame Assembly
BNT1211	Key Washer	BNT1611	Level Wind Guide		
BNT1212	Drag Washer (C)	BNT1692	Handle Nut Plate		
BNT1214	Drag Washer (A)	BNT1713	Brake Collar (green)		
BNT1218	Idle Gear (A) Spacer	BNT1714	Worm Shaft	BNT1715	Brake Collar (red)