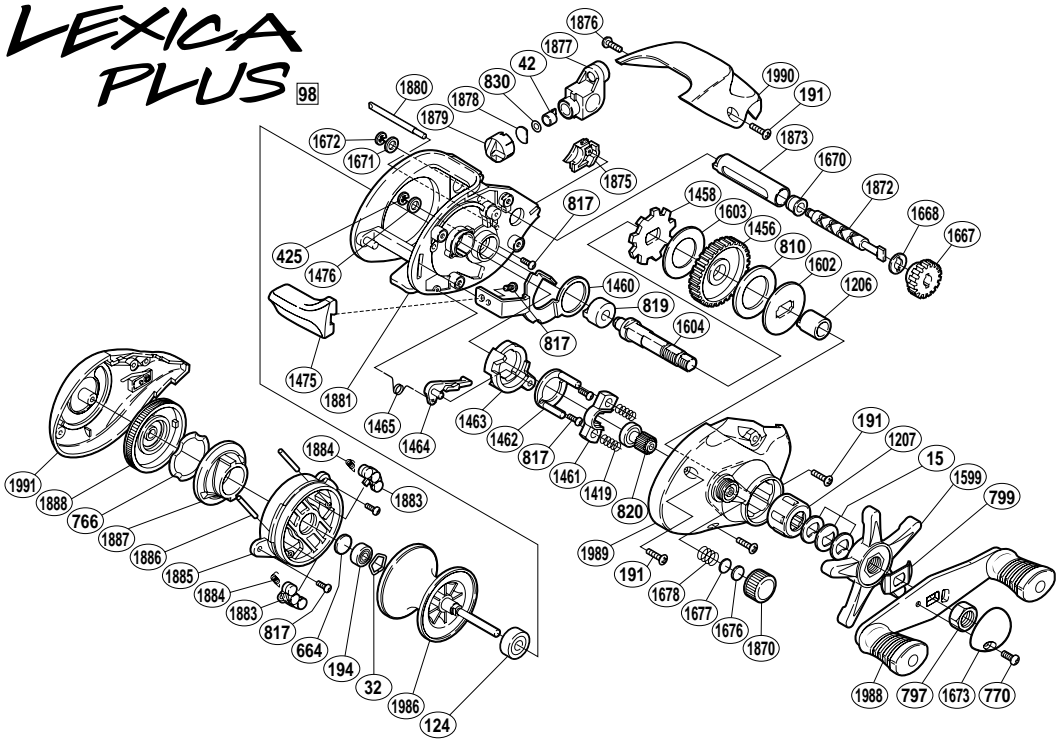


# LEXICA PLUS 98



BNT No.	PARTS NAMES	BNT No.	PARTS NAMES	BNT No.	PARTS NAMES
0015	Drag Spring Washer	1460	Clutch Plate	1872	Worm Shaft
0032	Bearing Retainer	1461	Yoke	1873	Level Wind Guard
0042	Line Guide Pawl	1462	Clutch Cam Retainer	1875	Drive Shaft Cover
0124	Ball Bearing	1463	Clutch Cam	1876	Thumb Rest Screw
0191	Multi-Purpose Screw	1464	Clutch Pawl	1877	Line Guide
0194	Ball Bearing	1465	Clutch Pawl Spring	1878	Pawl Cap Spacer
0425	Drive Gear Retainer	1475	Quick-Fire II Clutch Bar	1879	Pawl Cap
0664	Spacer (B)	1476	Drive Shaft Washer (D)	1880	Stabilizer Bar
0766	Dial Friction Washer	1599	Star Drag	1881	One-Piece Frame
0770	Handle Nut Plate Screw	1602	Key Washer	1883	Magnet Retainer
0797	Handle Nut	1603	Drive Shaft Washer	1884	Magnet Retainer Spring
0799	Friction Washer	1604	Drive Shaft	1885	Dial Case
0810	Drag Washer	1667	Worm Gear	1886	Magnet Retainer Shaft
0817	Multi-Purpose Screw	1668	Worm Shaft Washer (A)	1887	Brake Cam
0819	Drive Shaft Bushing	1670	Worm Bushing	1888	Magnetic Control Dial
0820	Pinion Gear	1671	Worm Shaft Washer (B)	1986	Spool
0830	Spacer (optional)	1672	"E" Lock	1988	Handle Assembly
1206	Roller Clutch Inner Tube	1673	Handle Nut Plate	1989	Right Side Plate
1207	Roller Clutch Bearing	1676	Spool Tension Spacer (B)	1990	Thumb Rest
1419	Yoke Spring	1677	Spool Tension Spacer (A)	1991	Left Side Plate
1456	Drive Gear	1678	Spool Tension Spring		
1458	Anti-Reverse Ratchet	1870	Cast Control Cap		