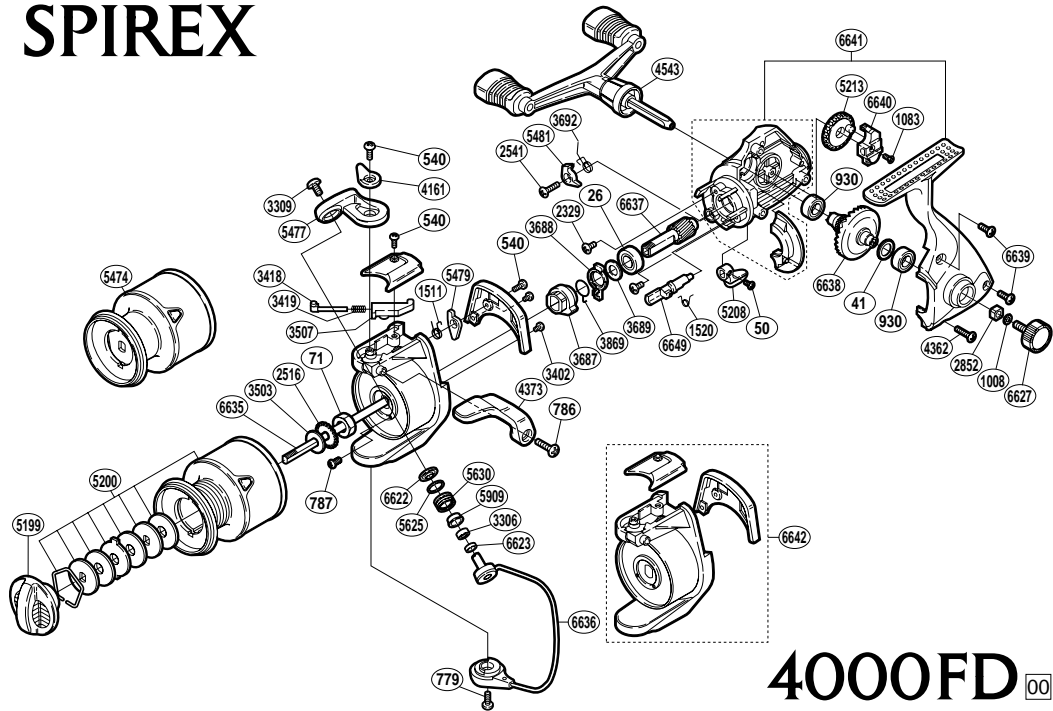


SPIREX



4000FD 00

| RD No. | PARTS NAMES | RD No. | PARTS NAMES | RD No. | PARTS NAMES |
|--------|--------------------------|--------|-------------------------------|--------|--------------------------|
| 0026 | Ball Bearing | 3402 | Cover Screw | 5477 | Bail Arm |
| 0041 | Drive Gear Washer | 3418 | Bail Spring Guide (A) | 5479 | Bail Trip Lever |
| 0050 | Anti-Reverse Lever Screw | 3419 | Bail Spring | 5481 | Anti-Reverse Pawl |
| 0071 | Rotor Nut | 3503 | Spool Washer | 5625 | Line Roller Spacer |
| 0540 | Multi-Purpose Screw | 3507 | Bail Spring Guide (B) | 5630 | Line Roller |
| 0779 | Bail Hold Support Screw | 3687 | Anti-Reverse Ratchet | 5909 | Line Roller Bushing |
| 0786 | Trigger Screw | 3688 | Anti-Reverse Lock Out | 6622 | Line Roller Washer |
| 0787 | Nut Lock Screw | 3689 | Bushing Washer | 6623 | Bearing Spacer |
| 0930 | Ball Bearing | 3692 | Anti-Reverse Pawl Spring | 6627 | Handle Screw Cap |
| 1008 | Handle Lock Washer | 3869 | Anti-Reverse Lock Out Spring | 6635 | Main Shaft |
| 1083 | Slider Retainer Screw | 4161 | Trigger Cam | 6636 | Bail Assembly |
| 1511 | Lever Spring | 4362 | Side Cover Screw (long) | 6637 | Pinion Gear |
| 1520 | Anti-Reverse Cam Spring | 4373 | Quick-Fire II Trigger | 6638 | Drive Gear |
| 2329 | Bearing Retainer Screw | 4543 | Double Paddle Handle Assembly | 6639 | Side Cover Screw (short) |
| 2516 | Spool Support | 5199 | Drag Knob | 6640 | Oscillating Slider |
| 2541 | Anti-Reverse Pawl Screw | 5200 | Spool Assembly (aluminum) | 6641 | Body Assembly |
| 2852 | Handle Screw Lock | 5208 | Anti-Reverse Lever | 6642 | Rotor Assembly |
| 3306 | Line Roller Bearing | 5213 | Oscillating Gear | 6649 | Anti-Reverse Cam |
| 3309 | Line Roller Screw | 5474 | Spool Assembly (graphite) | | |

(110819)