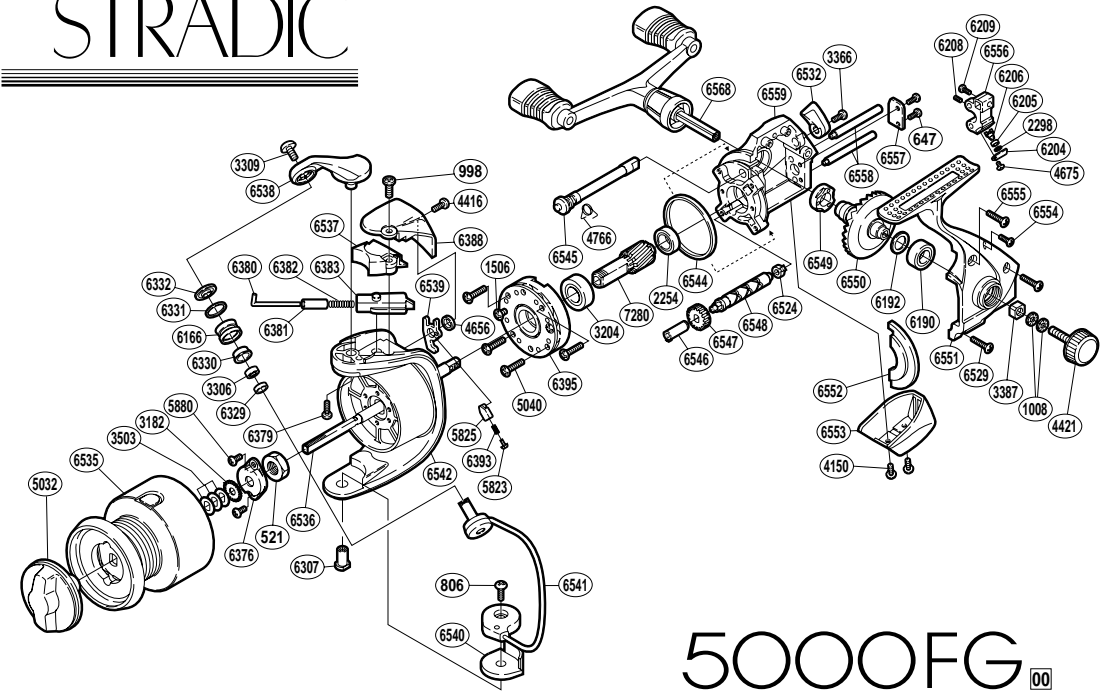


# STRADIC



## 5000FG 00

RD No.	PARTS NAMES	RD No.	PARTS NAMES	RD No.	PARTS NAMES
0521	Rotor Nut	6166	Line Roller	6536	Main Shaft
0647	Worm Shaft Retainer Screw	6190	Ball Bearing	6537	Bail Spring Cover
0806	Bail Hold Support Screw	6192	Drive Gear Washer	6538	Bail Arm
0998	Protector Screw (long)	6204	Oscillating Pawl Cover	6539	Bail Trip Lever
1008	Handle Lock Washer	6205	Oscillating Slider Bushing	6540	Bail Hold Support Spacer
1506	Clutch Cover Screw	6206	Oscillating Pawl	6541	Bail Assembly
2254	Ball Bearing	6208	Set Screw	6542	Rotor
2298	Spacer	6209	Slider Retainer Screw	6544	Friction Ring
3182	Spool Support	6307	Bail Hold Support Shaft	6545	Anti-Reverse Cam
3204	Ball Bearing	6329	Bearing Spacer	6546	Worm Bushing (front)
3306	Ball Bearing	6330	Line Roller Bushing	6547	Idle Gear
3309	Line Roller Screw	6331	Line Roller Spacer	6548	Worm Shaft
3366	Anti-Reverse Lever Screw	6332	Line Roller Washer	6549	Drive Gear Bushing
3387	Handle Screw Lock	6376	Rotor Nut Lock Plate	6550	Drive Gear
3503	Spool Washer	6379	Bail Arm Screw	6551	Side Cover
4150	Rear Protector Screw	6380	Bail Spring Guide (A)	6552	Side Cover Flange
4416	Protector Screw (short)	6381	Spring Guide (A) Support	6553	Rear Protector
4421	Handle Screw Cap	6382	Bail Spring	6554	Side Cover Screw (small)
4656	Trip Lever Spacer	6383	Bail Spring Guide (B)	6555	Side Cover Screw (medium)
4675	Oscillating Pawl Cover Screw	6388	Rotor Protector	6556	Oscillating Slider
4766	Anti-Reverse Cam Spring	6393	Lever Spring	6557	Worm Shaft Retainer
5032	Drag Knob	6395	Roller Clutch Assembly	6558	Oscillating Guide
5040	Roller Clutch Screw	6524	Worm Bushing (rear)	6559	Body
5823	Lever Spring Guide (A)	6529	Side Cover Screw (long)	6568	Double Paddle Handle Assembly
5825	Lever Spring Guide (B)	6532	Anti-Reverse Lever	7280	Pinion Gear
5880	Nut Lock Screw	6535	Spool Assembly		