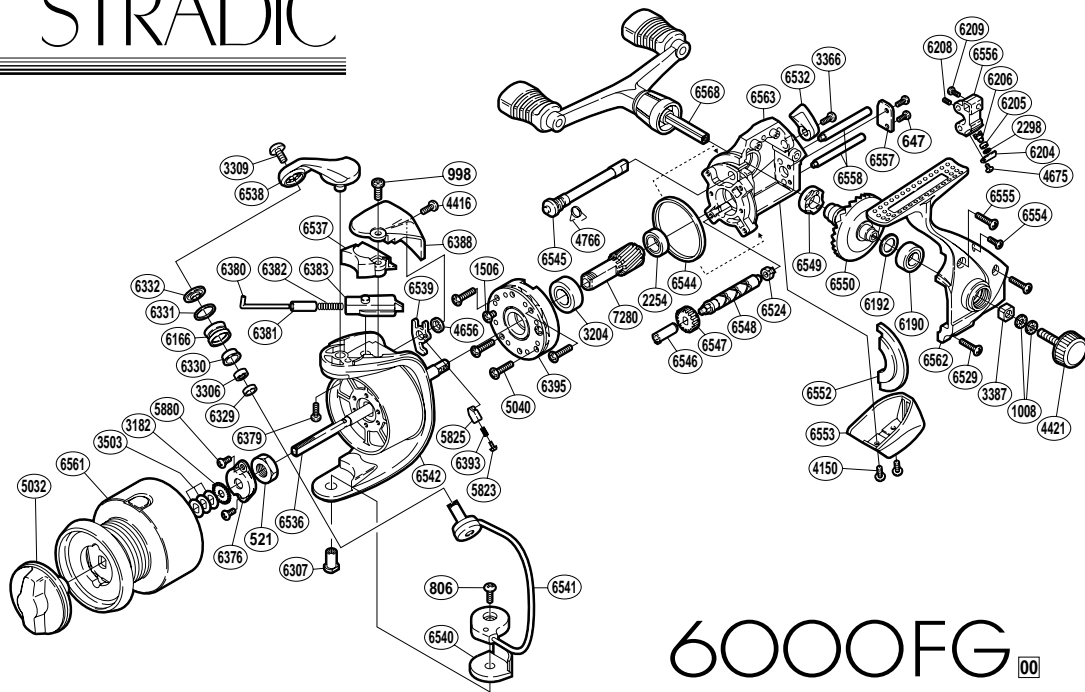


STRADIC



6000FG 00

RD No.	PARTS NAMES	RD No.	PARTS NAMES	RD No.	PARTS NAMES
0521	Rotor Nut	6166	Line Roller	6537	Bail Spring Cover
0647	Worm Shaft Retainer Screw	6190	Ball Bearing	6538	Bail Arm
0806	Bail Hold Support Screw	6192	Drive Gear Washer	6539	Bail Trip Lever
0998	Protector Screw (long)	6204	Oscillating Pawl Cover	6540	Bail Hold Support Spacer
1008	Handle Lock Washer	6205	Oscillating Slider Bushing	6541	Bail Assembly
1506	Clutch Cover Screw	6206	Oscillating Pawl	6542	Rotor
2254	Ball Bearing	6208	Set Screw	6544	Friction Ring
2298	Spacer	6209	Slider Retainer Screw	6545	Anti-Reverse Cam
3182	Spool Support	6307	Bail Hold Support Shaft	6546	Worm Bushing (front)
3204	Ball Bearing	6329	Bearing Spacer	6547	Idle Gear
3306	Ball Bearing	6330	Line Roller Bushing	6548	Worm Shaft
3309	Line Roller Screw	6331	Line Roller Spacer	6549	Drive Gear Bushing
3366	Anti-Reverse Lever Screw	6332	Line Roller Washer	6550	Drive Gear
3387	Handle Screw Lock	6376	Rotor Nut Lock Plate	6552	Side Cover Flange
3503	Spool Washer	6379	Bail Arm Screw	6553	Rear Protector
4150	Rear Protector Screw	6380	Bail Spring Guide (A)	6554	Side Cover Screw (small)
4416	Protector Screw (short)	6381	Spring Guide (A) Support	6555	Side Cover Screw (medium)
4421	Handle Screw Cap	6382	Bail Spring	6556	Oscillating Slider
4656	Trip Lever Spacer	6383	Bail Spring Guide (B)	6557	Worm Shaft Retainer
4675	Oscillating Pawl Cover Screw	6388	Rotor Protector	6558	Oscillating Guide
4766	Anti-Reverse Cam Spring	6393	Lever Spring	6561	Spool Assembly
5032	Drag Knob	6395	Roller Clutch Assembly	6562	Side Cover
5040	Roller Clutch Screw	6524	Worm Bushing (rear)	6563	Body
5823	Lever Spring Guide (A)	6529	Side Cover Screw (long)	6568	Double Paddle Handle Assembly
5825	Lever Spring Guide (B)	6532	Anti-Reverse Lever	7280	Pinion Gear
5880	Nut Lock Screw	6536	Main Shaft		