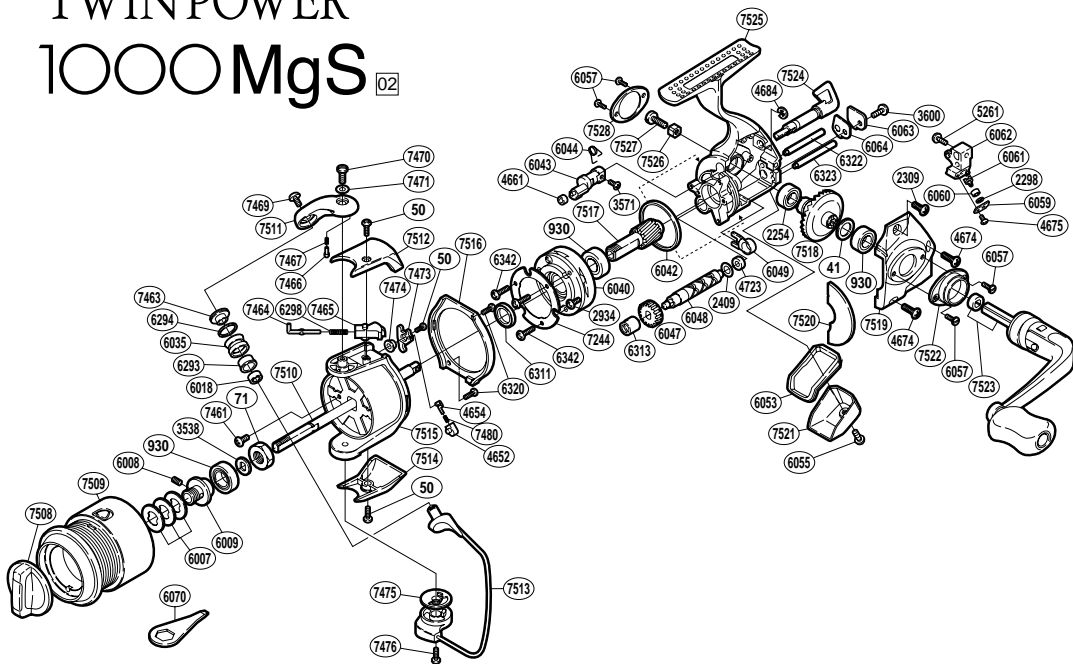


TWIN POWER 1000 MgS 02



RD No.	PARTS NAMES	RD No.	PARTS NAMES	RD No.	PARTS NAMES
0041	Drive Gear Washer	6047	Idle Gear	7469	Line Roller Screw
0050	Multi-Purpose Screw	6048	Worm Shaft	7470	Bail Arm Screw
0071	Rotor Nut	6049	Bushing	7471	Bail Arm Screw Washer
0930	Ball Bearing	6053	Rear Shield	7473	Bail Trip Lever
2254	Ball Bearing	6055	Rear Protector Screw	7474	Bail Trip Lever Washer
2298	Spacer	6057	Cap Screw	7475	Bail Hold Support Spacer
2309	Side Cover Screw (short)	6059	Oscillating Pawl Cover	7476	Bail Hold Support Screw
2409	Worm Shaft Spacer	6060	Oscillating Slider Bushing	7480	Lever Spring
2934	Clutch Cover Screw	6061	Oscillating Pawl	7508	Drag Knob
3538	Spool Support	6062	Oscillating Slider	7509	Spool Assembly
3571	Anti-Reverse Cam Screw	6063	Worm Shaft Retainer	7510	Main Shaft
3600	Worm Shaft Retainer Screw	6064	Worm Shaft Retainer Washer	7511	Bail Arm
4652	Lever Spring Guide (B)	6070	Wrench (accessory)	7512	Bail Spring Cover
4654	Lever Spring Guide (A)	6293	Line Roller Bushing	7513	Bail Assembly
4661	Anti-Reverse Cam Ring	6294	Line Roller Spacer	7514	Bail Hold Support Guard
4674	Side Cover Screw	6298	Bail Spring	7515	Rotor
4675	Oscillating Pawl Cover Screw	6311	Rotor Spacer	7516	Rotor Guard
4684	"E" Lock	6313	Worm Bushing (front)	7517	Pinion Gear
4723	Worm Bushing (rear)	6320	Rotor Guard Screw	7518	Drive Gear
5261	Slider Retainer Screw	6322	Oscillating Guide (A)	7519	Side Cover
6007	Spool Washer	6323	Oscillating Guide (B)	7520	Side Cover Flange
6008	Set Screw	6342	Roller Clutch Screw	7521	Rear Protector
6009	Bearing Bushing	7244	Roller Clutch Reinforce	7522	Handle Screw Cap (A)
6018	Ball Bearing	7461	Nut Lock Screw	7523	Handle Assembly
6035	Line Roller	7463	Line Roller Washer	7524	Anti-Reverse Lever
6040	Roller Clutch Assembly	7464	Bail Spring Guide (A)	7525	Body
6042	Friction Ring	7465	Bail Spring Guide (B)	7526	Handle Lock Washer
6043	Anti-Reverse Cam	7466	Click Pin	7527	Handle Lock Screw
6044	Anti-Reverse Cam Spring	7467	Click Spring	7528	Handle Screw Cap (B)