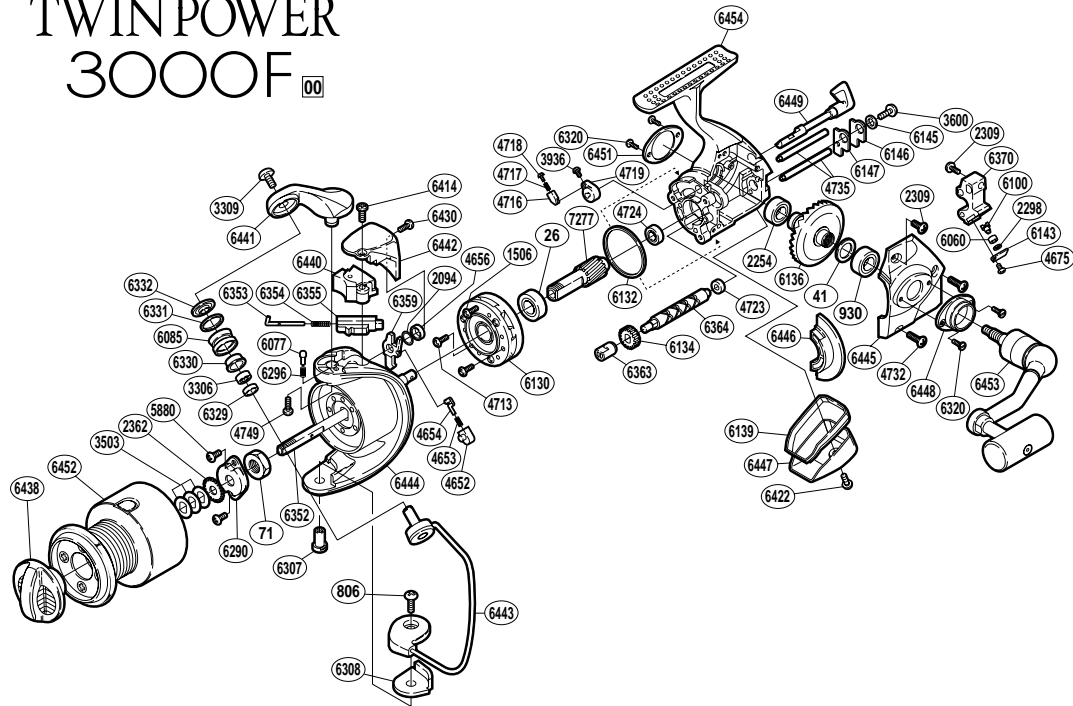


# TWIN POWER 3000F



RD No.	PARTS NAMES	RD No.	PARTS NAMES	RD No.	PARTS NAMES
0026	Ball Bearing	4724	Ball Bearing	6352	Main Shaft
0041	Drive Gear Washer	4732	Side Cover Screw	6353	Bail Spring Guide (A)
0071	Rotor Nut	4735	Oscillating Guide	6354	Bail Spring
0806	Bail Hold Support Screw	4749	Bail Arm Screw	6355	Bail Spring Guide (B)
0930	Ball Bearing	5880	Nut Lock Screw	6359	Bail Trip Lever
1506	Clutch Cover Screw	6060	Oscillating Slider Bushing	6363	Worm Bushing (front)
2094	Spacer	6077	Click Pin	6364	Worm Shaft
2254	Ball Bearing	6085	Line Roller	6370	Oscillating Slider
2298	Spacer	6100	Oscillating Pawl	6414	Protector Screw (A)
2309	Multi-Purpose Screw	6130	Roller Clutch Assembly	6422	Rear Protector Screw
2362	Spool Support	6132	Friction Ring	6430	Protector Screw (B)
3306	Ball Bearing	6134	Idle Gear	6438	Drag Knob
3309	Line Roller Screw	6136	Drive Gear	6440	Bail Spring Cover
3503	Spool Washer	6139	Rear Shield	6441	Bail Arm
3600	Worm Shaft Retainer Screw	6143	Oscillating Pawl Cover	6412	Rotor Protector
3936	Anti-Reverse Cam Screw	6145	Worm Shaft Retainer Spacer	6443	Bail Assembly
4652	Lever Spring Guide (B)	6146	Worm Shaft Retainer	6444	Rotor
4653	Lever Spring	6147	Worm Shaft Retainer Washer	6445	Side Cover
4654	Lever Spring Guide (A)	6290	Rotor Nut Lock Plate	6446	Side Cover Flange
4656	Trip Lever Spacer	6296	Click Spring	6447	Rear Protector
4675	Oscillating Pawl Cover Screw	6307	Bail Hold Support Shaft	6448	Handle Screw Cap (A)
4713	Roller Clutch Screw	6308	Bail Hold Support Spacer	6449	Anti-Reverse Lever
4716	Lever Spring Guide (B)	6320	Cap Screw	6451	Handle Screw Cap (B)
4717	Lever Spring	6329	Bearing Spacer	6452	Spool Assembly
4718	Lever Spring Guide (A)	6330	Line Roller Bushing	6453	Handle Assembly
4719	Anti-Reverse Cam	6331	Line Roller Spacer	6454	Body
4723	Worm Bushing (rear)	6332	Line Roller Washer	7277	Pinion Gear